

Microsoft®
.NET

Windows Presentation Foundation

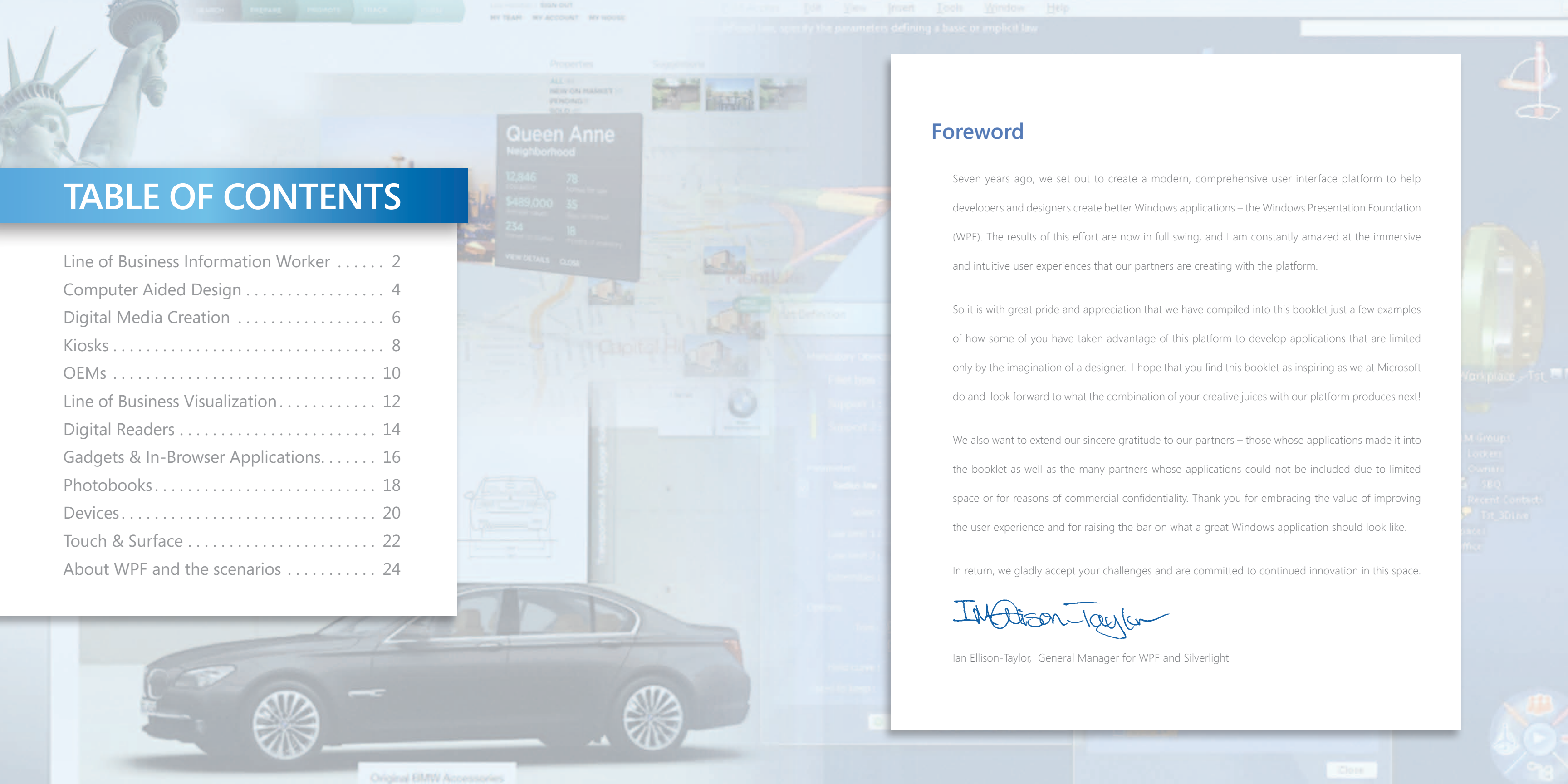


TABLE OF CONTENTS

Line of Business Information Worker	2
Computer Aided Design	4
Digital Media Creation	6
Kiosks	8
OEMs	10
Line of Business Visualization	12
Digital Readers	14
Gadgets & In-Browser Applications	16
Photobooks	18
Devices	20
Touch & Surface	22
About WPF and the scenarios	24

Foreword

Seven years ago, we set out to create a modern, comprehensive user interface platform to help developers and designers create better Windows applications – the Windows Presentation Foundation (WPF). The results of this effort are now in full swing, and I am constantly amazed at the immersive and intuitive user experiences that our partners are creating with the platform.

So it is with great pride and appreciation that we have compiled into this booklet just a few examples of how some of you have taken advantage of this platform to develop applications that are limited only by the imagination of a designer. I hope that you find this booklet as inspiring as we at Microsoft do and look forward to what the combination of your creative juices with our platform produces next!

We also want to extend our sincere gratitude to our partners – those whose applications made it into the booklet as well as the many partners whose applications could not be included due to limited space or for reasons of commercial confidentiality. Thank you for embracing the value of improving the user experience and for raising the bar on what a great Windows application should look like.

In return, we gladly accept your challenges and are committed to continued innovation in this space.

Ian Ellison-Taylor

Ian Ellison-Taylor, General Manager for WPF and Silverlight

LINE OF BUSINESS INFORMATION WORKER

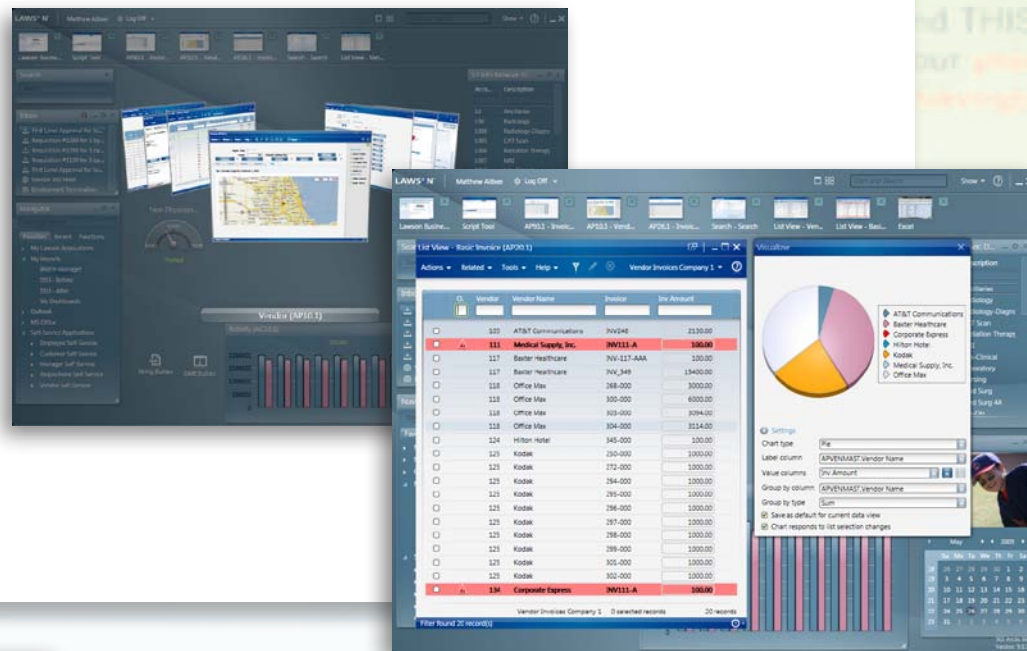
Lawson

Lawson Smart Office

The Lawson Smart Office leverages WPF to deliver a user experience that is unequaled in the ERP space in terms of its beauty and usability. The Lawson Smart Office delivers on the needs and expectations of a future generation of ERP users.

"WPF allows us to build visually rich applications and still maintain a clear separation between the user interface and the business logic."

—Matthew Allbee,
Director – User Productivity Platform, Lawson Software



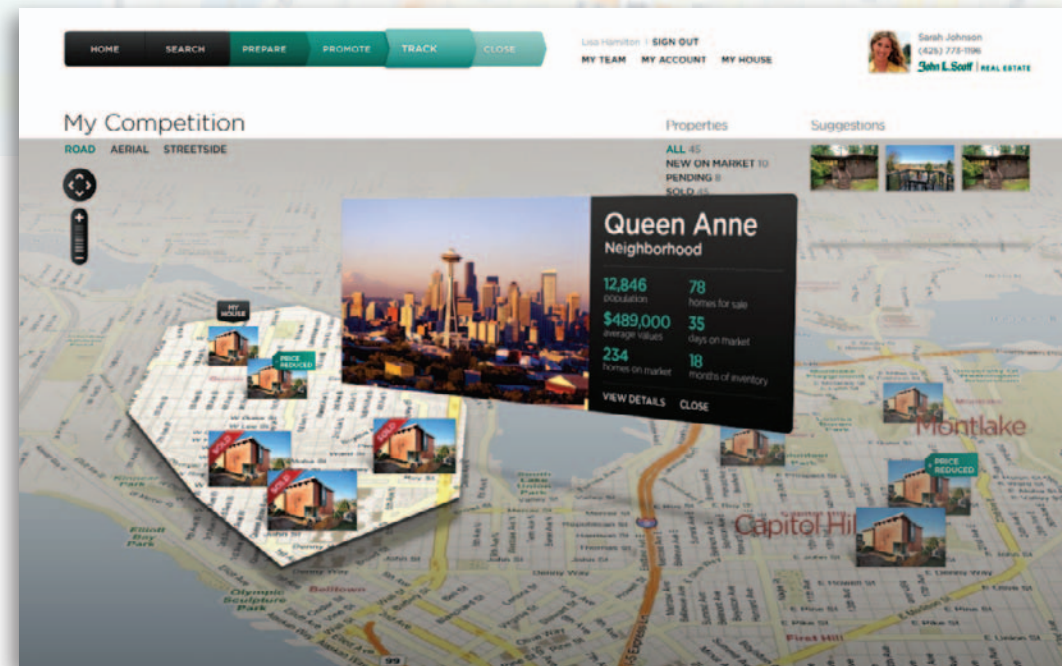
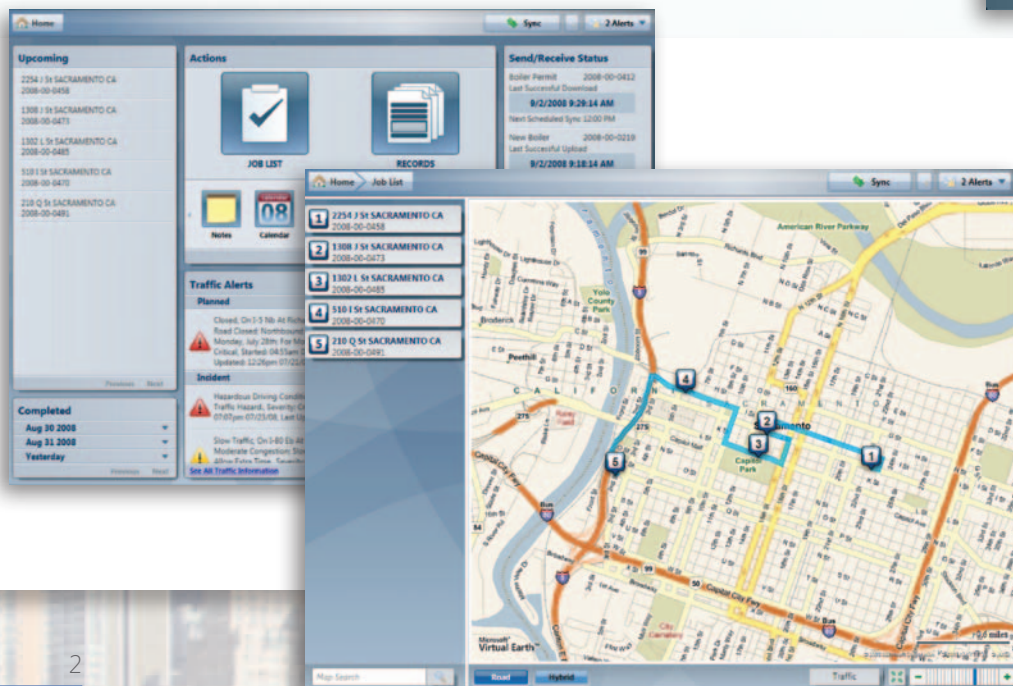
Accela

Accela Mobile Office

Complete mobile office application for state and local government agencies. It helps employees manage field tasks like inspections and code enforcements.

"The product provides a robust and intuitive solution that greatly enhances the productivity of our users."

—Maury Blackman, President & CEO, Accela.



John L. Scott

Seller Portal

The Seller application uses a software-plus-services approach to compose market data from the John L. Scott data center, the Microsoft Virtual Earth™ online mapping platform and third party feeds, combining information from all sources and presenting it to users through a rich, interactive user experience based on Windows® Presentation Foundation. The application serves to optimize a home seller's experience around marketing their home and it strengthens the relationship between agent and sellers.

"With Windows Presentation Foundation, Virtual Earth, and a software-plus-services approach, we've been able to combine information from different sources and deliver it though a user experience that has exceeded even our own expectations."

—Pat Giles, Vice President of Marketing, Internet, and IT, John L. Scott Real Estate

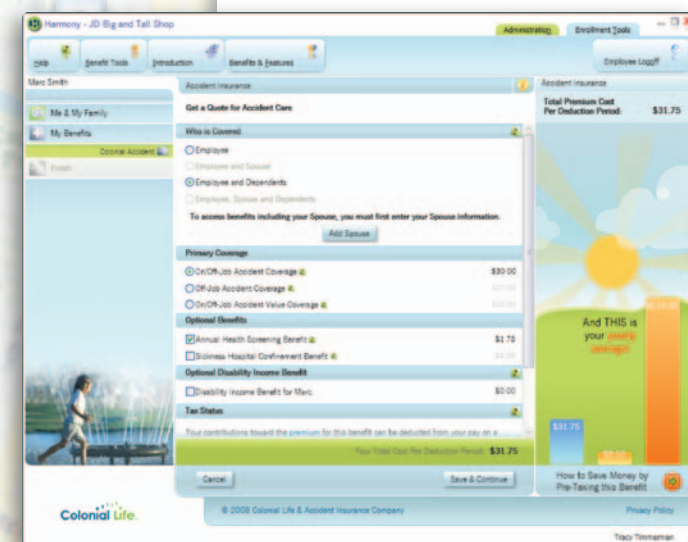
Colonial Life

Harmony

Provides a rich, engaging experience for Colonial's agents, brokers, and potential policyholders to navigate the enrollment process.

"Windows Presentation Foundation enables us to clearly and graphically display robust information about an individual's benefits."

—Chip James, Assistant Vice President
of IT Enrollment Systems, Colonial Life



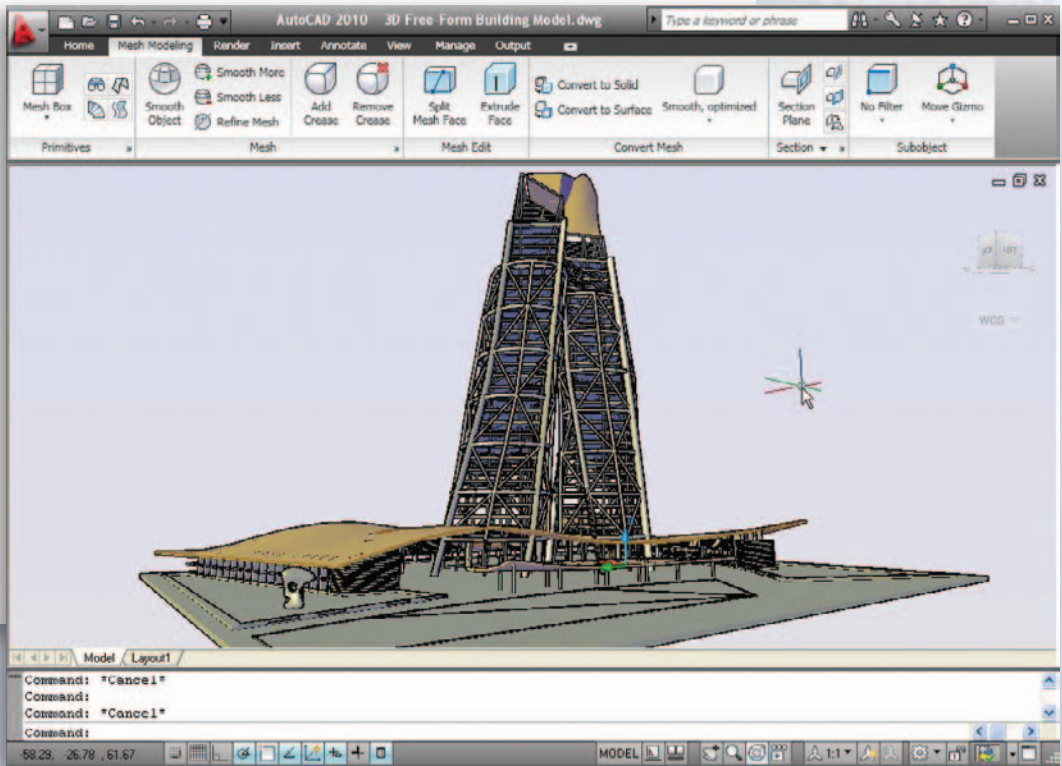
COMPUTER AIDED DESIGN

Autodesk AutoCAD 2010

AutoCAD is one of the world's leading applications for 2D and 3D CAD. AutoCAD helps users speed documentation, share ideas seamlessly, explore ideas more intuitively in 3D, and customize programs for their specific needs so they can take design further.

"The new ribbon-based User Interface in AutoCAD makes features more discoverable. AutoCAD customers are increasing their productivity by having the right tool available at the right time and in many cases, customizing the UI so they can tailor AutoCAD to fit their particular project needs."

—Eric Stover, AutoCAD Product Line Manager, Autodesk, Inc.



Dassault Systemes CATIA

CATIA enables the full spectrum of next generation collaborative virtual design, including shape design, mechanical and equipment engineering, as well as systems engineering integrating requirement, functional, logical and physical product definitions.



Bunkspeed HyperDrive

HyperDrive is a product visualization tool that helps companies transform engineering data into realistic on-screen prototypes.

"Windows Presentation Foundation supports advanced hardware-accelerated graphics and sophisticated controls, simplifies our development effort, and provides greater separation of the business and presentation logic."

—Mark Rotenberg, Director of Engineering for Bunkspeed



DIGITAL MEDIA CREATION

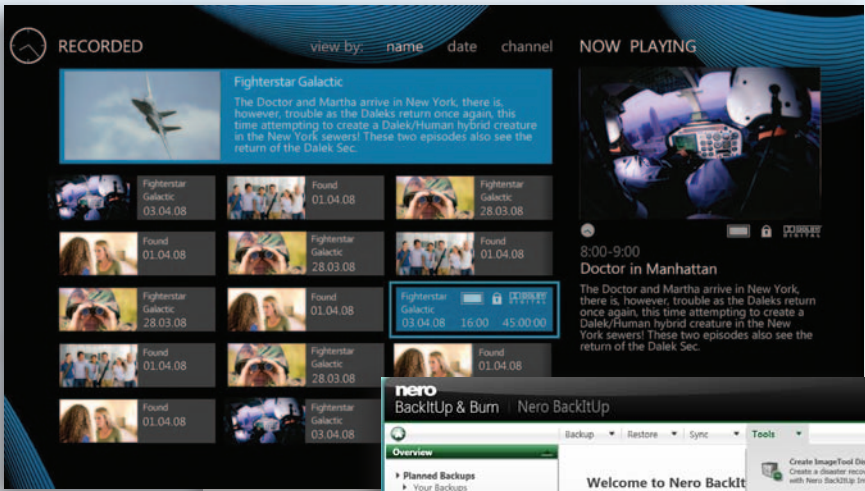
Roxio

Roxio Creator 2009

Roxio Creator 2009 is the only complete digital media software that lets family members of every age and experience level to easily create, preserve, and share their stories and passions.

"Using Windows Presentation Foundation in redesigning our flagship product allowed us to create an exciting, visually rich application that bolsters our leadership position in the digital media market."

—Vito Salvaggio, VP of Consumer Products.



Nero

Nero 9 (Live, BackItUp & Burn, Nero ShowTime)

Nero 9 is a comprehensive suite of applications that includes all the functionality to make creating, enjoying, and sharing digital media content very simple.

"With WPF Nero was able to quickly bring to market their new Nero BackItUp & Burn, Nero Live and Nero ShowTime products. These were designed using expression and blend tools allowing our designers and developers to efficiently go from mock up to working code much faster than traditional UI development methods"

—Kris Barton, Executive Vice President of Global Products at Nero

Magix

Magix Media Viewer

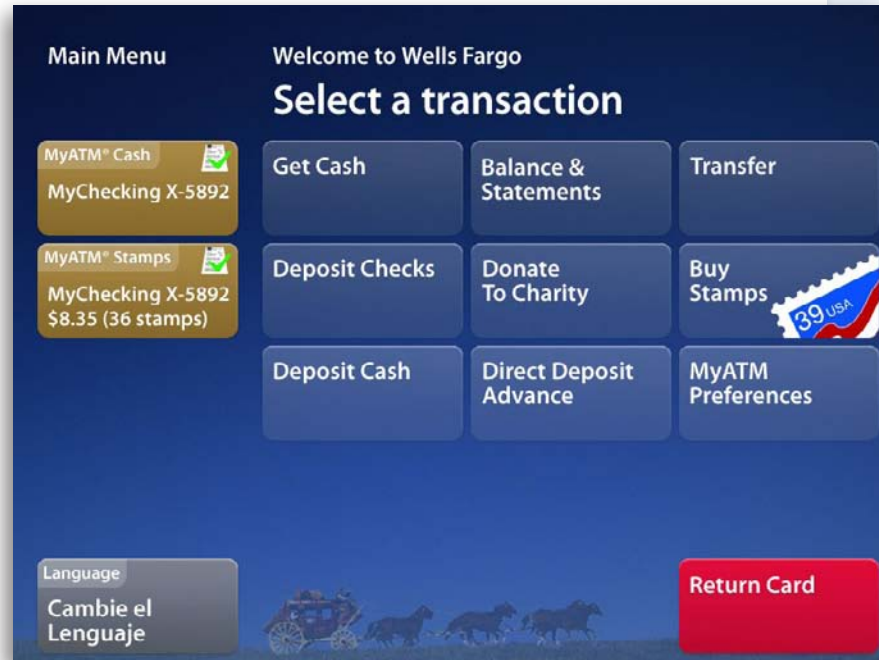
Viewer for digital media within the Magix suite of applications. Supports transitions, slideshows, rotations, and other common media visualizations.

"Expression Blend is critical to our creative process; with XAML we can accelerate our time-to-market and increase ROI by having developers and designers collaborate efficiently."

—Christian Mueller, Magix



KIOSKS



Wells Fargo NextGen ATM

NextGen ATM is a 24x7x365 consumer experience to drive Wells Fargo's innovative envelope-free ATMs.

"Using the capabilities of WPF, the NextGen ATM client responds with dynamic—almost cinematic—visual elements."

—Jonathan Velline, Senior Vice President of ATM Banking, Wells Fargo

The North Face North Face Kiosk

In-store kiosk for accelerating consumer purchases of premium adventure wear.

"With the next generation of Windows we have the opportunity to deliver a different league of customer experience, to develop more interactive, productive experiences that showcase our brand expertise and what we do."

—Joe Flannery, VP of marketing for The North Face



TagWorks TagWorks

TagWorks is an interactive sales kiosk that uses the latest laser engraving technology to create stunning pet ID tags for your dogs or cats.

"WPF gave us all of the tools we needed to link these controls with an interface that made the process of creating a custom pet tag, a simple and entertaining experience."

—Joel Neubeck, Director of Technology TerraLever



Continental Airlines Gate Display

This WPF application displays the gate announcements for Continental's terminals throughout the airport.

"Our familiarity with Visual Studio and the .NET framework, made it easy for us to go to the next step and use Windows Presentation Foundation on gate display and turn around a product very quickly."

—Michael Natale, Managing Director, Emerging Technology, Continental Airlines

OEMs

Lenovo ThinkVantage

Portfolio of IT management tools to manage every stage of the PC life cycle.

"The goal of Power Manager is to provide the advanced power management settings in the simplest manner. WPF helps to develop attractive yet simple user interface very fast, WPF also supports all our multi-language requirements, making localization very easy."



HP

HP Total Care Advisor

HP Advisor helps make your PC easier to use –view your status at a glance, access support, discover more ways to use your PC (edit photos, create video, manage music, etc.), and navigate easily to your favorite software and services.

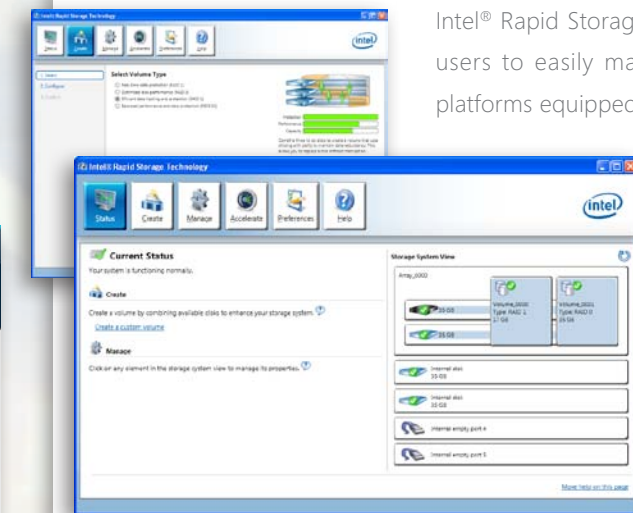
"With WPF, we develop new Advisor functionalities very rapidly. WPF allows our developers to more easily and quickly match our designer's creativity. The ease of using WPF enables to develop new and innovative features, while managing ongoing release and maintenance to our broad install base."

–Diane Weiss, Product Manager, Experience Software, HP

Intel

Intel Rapid Storage Technology

Intel® Rapid Storage Technology user interface allows users to easily manage Intel® desktop and mobile platforms equipped with SATA disks.



"WPF impressed our developers with its power and flexibility. We had a tight schedule and using WPF made it easier to achieve our goals and a high deliver quality, visually appealing interface with enhanced usability."

–Susan Foster, Intel Corporation.

AMD

AMD Fusion Media Explorer

AMD Fusion Media Explorer is a 3D immersive social media and digital media browser

"There is no better (and faster) way to navigate your media library, than our fluid, 3D, ribbon."

–Casey Gotcher, Director of Product Marketing, AMD.



LINE OF BUSINESS VISUALIZATION

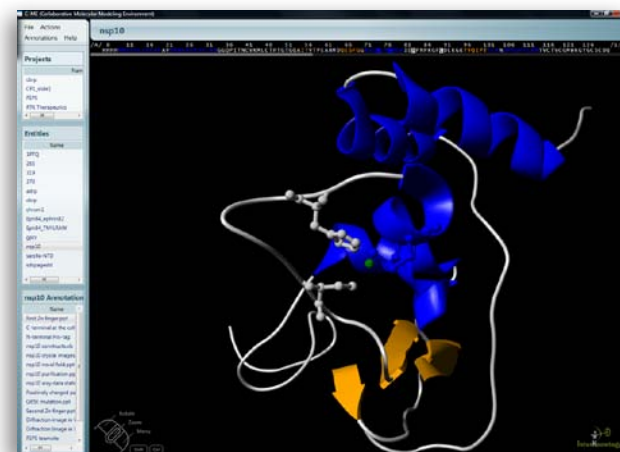
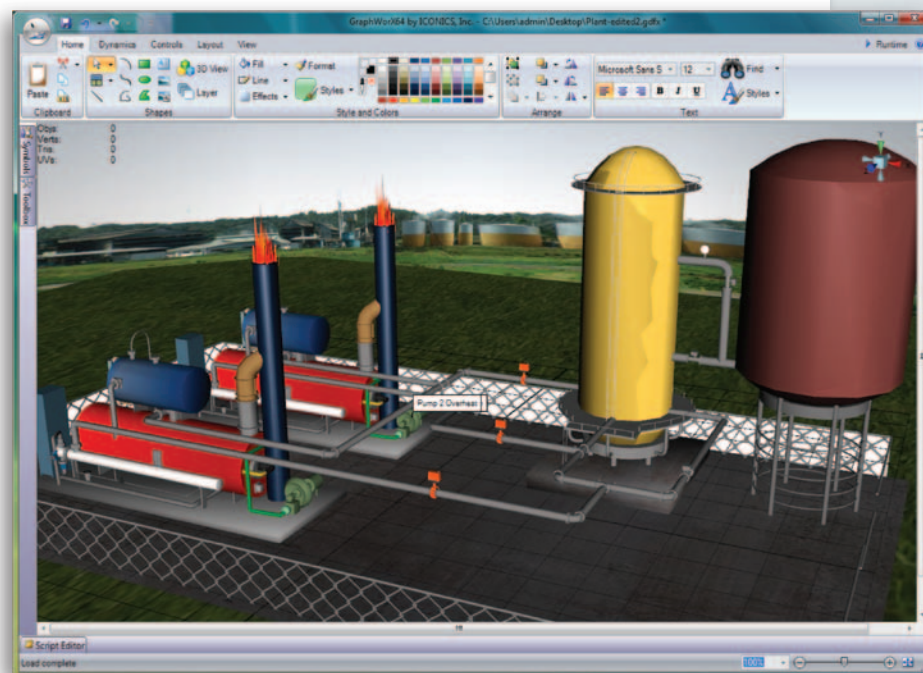
Iconics

GENESIS 64

Suite of applications to automate manufacturing processes. Includes HMI, SCADA, and advanced visualization tools to effectively connect the plant floor to corporate business systems.

"WPF provided us everything that we could dream of for developing new visually compelling applications that deliver an unprecedented user experience to our users."

—Simone Massaro, Lead Program Manager, ICONICS, Inc.



The Scripps Research Institute

Collaborative Molecular Environment

3D visualization and collaboration tool for cancer research.

"WPF allowed us to build the CME in a fraction of the time it would have taken using earlier technologies."

—Tim Huckaby, CEO, InterKnowlogy

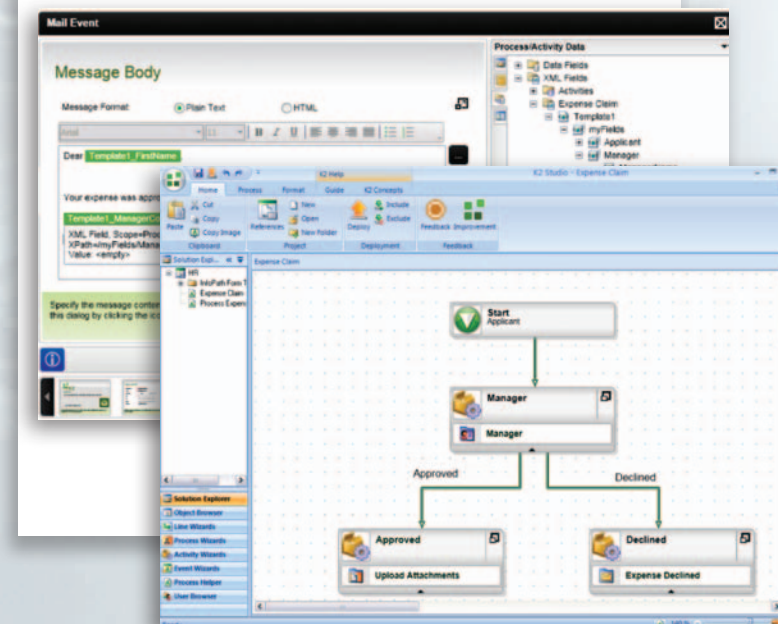
K2

K2 Studio

K2 provides a platform for building process-driven applications that improve business efficiency. K2 workflow designer can seamless scale from simple collaborative workflows to complete Business Process Management solutions.

"Our investment in WPF and Silverlight enables significant productivity gains in our development teams; we can accomplish more than we did before, in a timeframe that continues to keep us in the leadership position."

—Adriaan Van Wyk, CEO of K2



AirStrip

Console for monitoring real-time patient data which is intuitive, highly discoverable and unifies a powerful set of decision making tools.

"Windows Presentations Foundation makes this type of dynamic, modular user interface possible, while also delivering far more intuitive data visualizations."

—Cameron Powell, MD, Airstrip Technologies

DIGITAL READERS

Apabi

Apabi Inspire Reader

High-fidelity reader for digital content, including news papers, books, and auction catalogs.



Chosun Ilbo

iReader

E-paper platform that provides the best electronic reading experience for news.

"As the newspaper stands a chance of losing its past glory in this new media era, a new paradigm shift in news production, processing, and delivery is not an option but a must."

—Bang Jeong-oh, Business Planning Division, Chosun



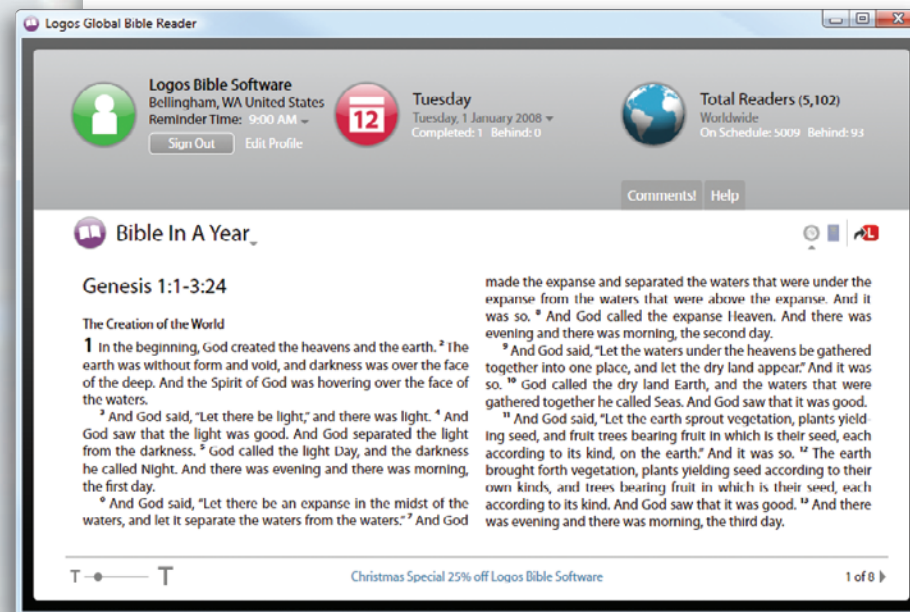
Logos

Global Bible Reader

Global Bible Reader helps you stay on track with your daily Bible readings by connecting you to a community of people all following the same reading schedule.

"WPF made it easy to deliver a rich user interface that's lots of fun. We took advantage of the powerful text formatting for a great re-sizable, multi-column reading experience and even used 3D graphics to show your friends around the world on a rotating, zooming globe."

—Bob Pritchett, Logos Bible Software



GADGETS & IN-BROWSER APPLICATIONS

Hong Kong Disney

Hong Kong Disney Park Explorer

Windows gadget that allows you to virtually navigate the Disney park and plan a fun vacation.

"Advertisers see the branded gadgets as another opportunity to engage with customers. Your brand is front and center with them."

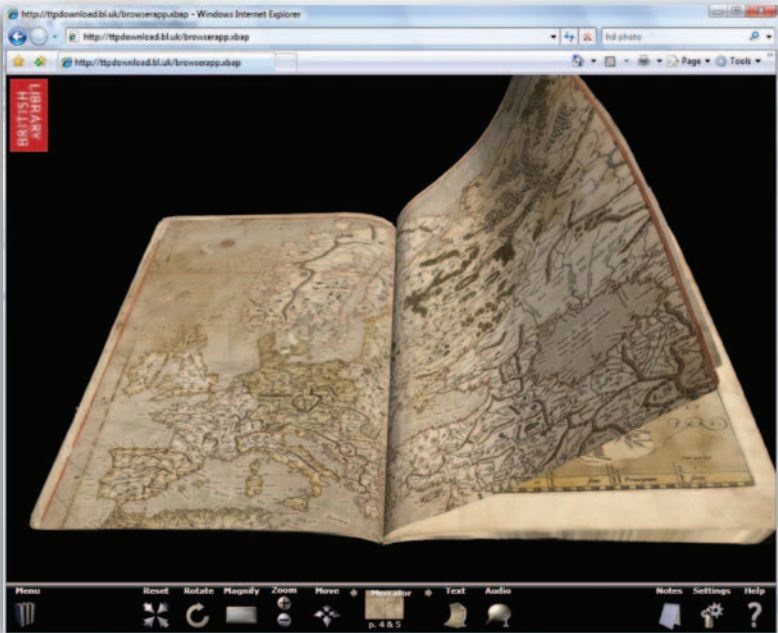
—Robbie Bach, Vice President, Microsoft E&D Division



T-Online

Meine Software

Suite of consumer applications that brings the online information you care about to your desktop. Includes weather, time, news, search and other service. Integrateates with Windows Sidebar for one-click access from the desktop.



British Library

Turning the Pages 2.0

Turning the Pages 2.0 offers researchers an opportunity to explore digitized versions of some of the world's greatest texts, combining a rich and life-like interaction with the text itself with a potential for collaborative international research.

"This is a great example of how personal computing has enormous power to change the way we think and learn through digital access to information. Viewing the two Codices using the British Library's 'Turning the Pages 2.0' application on Windows Vista is truly an amazing experience."

—Bill Gates

Thirteen23

Blu

Blu is a twitter client that focuses on ease-of-use and provides a high-fidelity user interface.

"WPF has an excellent architecture that can be easily extended to create custom controls and interactions. It has proven to be a great framework for taking our ideas from concept to reality."

— thirteen23

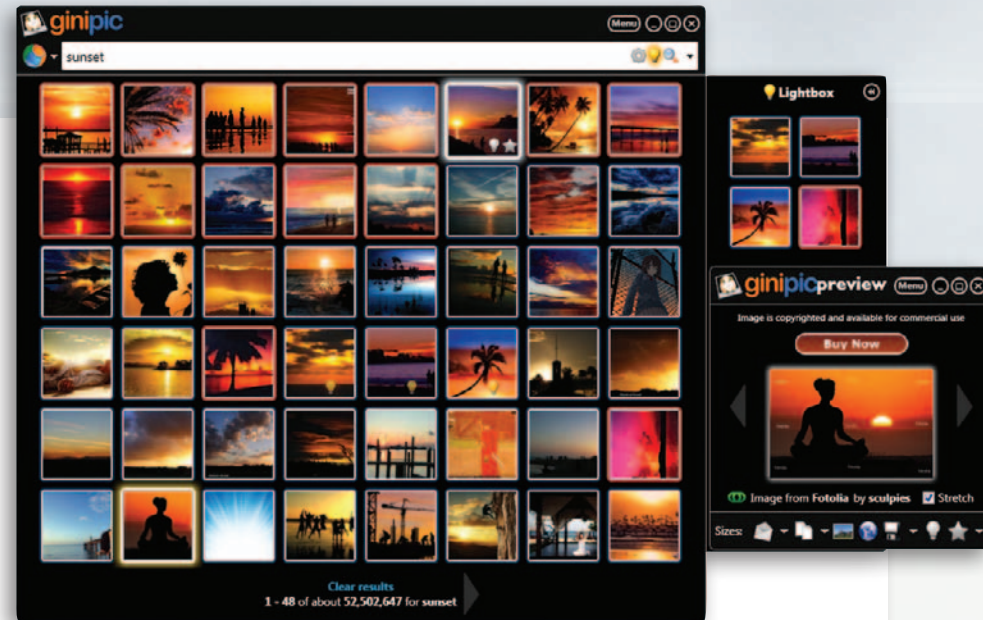


PHOTOBOOKS

Fotoquelle

Fotoquelle Fotobuch

Fotobuch is the easiest way to turn digital photos into memories.



Ginipic

Ginipic revolutionizes how people find and use images online. Ginipic can simultaneously search multiple sources including search engines, photo sharing sites, social networks, stock photo agencies or local collections, and enable users to complete any task quickly and efficiently with an intuitive user interface.

"For our first release, we wanted to focus on integration with as many leading online photo services as possible. WPF allowed us to focus on that aspect of the business, whilst still creating a very compelling and adaptable user experience quickly to minimize our time-to-market."

—Lior Weinstein, Co-Founder - Ginipic Ltd.



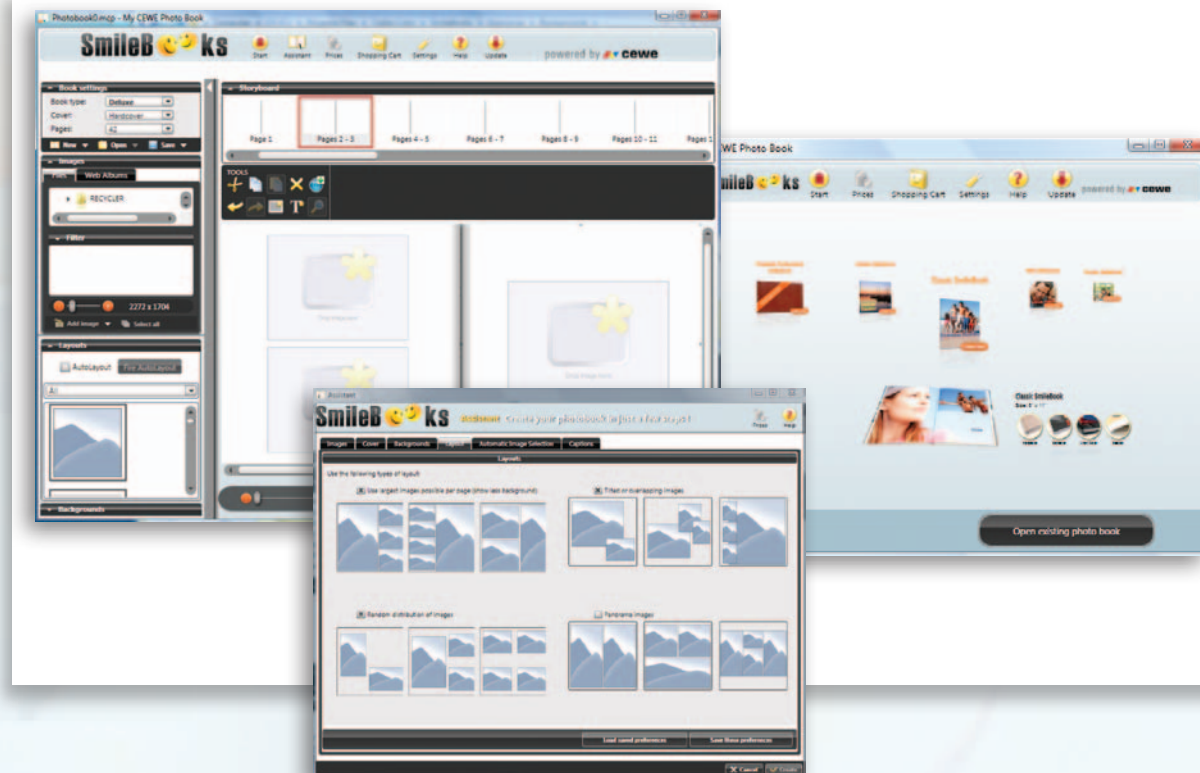
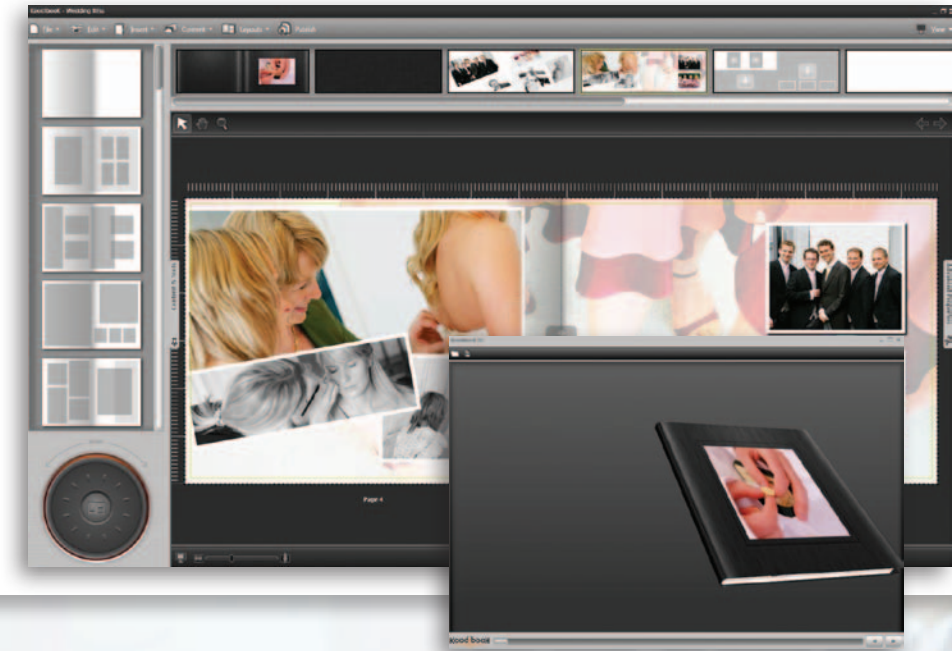
Koodibook

Koodibook

Koodibook Provides a fun, interactive "create once, publish anywhere" solution for both professional photographers and consumers to create amazing looking photo books.

"Our users love the 3D flips; it makes the digital books feel real."

—Richard Godfrey, Founder iPrinciples

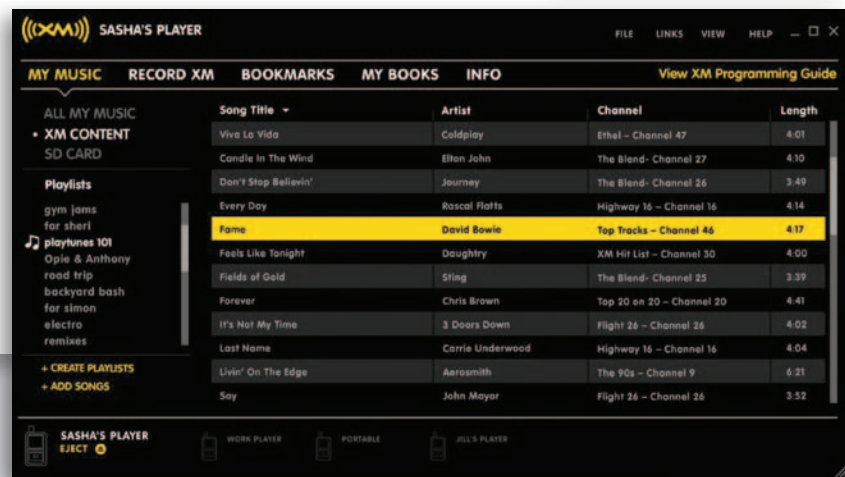


CEWE Color SmileBooks

SmileBooks helps you turn your favorite digital photos into treasured photo books.

"We make it so easy to build a SmileBook that we think digital photos will spend less time in the hard drive and more time in a coffee table book for all to see."

DEVICES

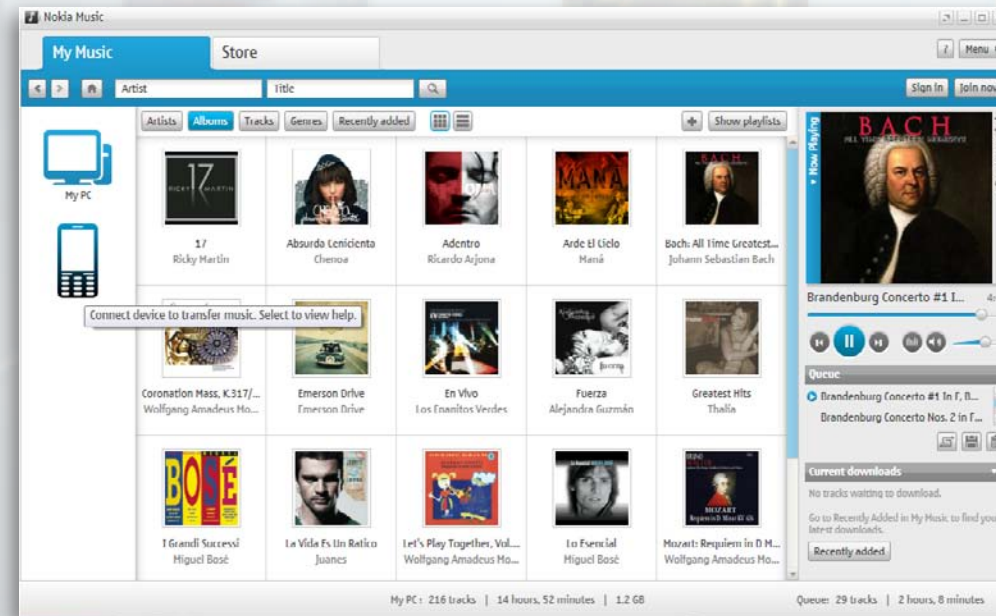


SIRIUSXM XM2Go Music Manager

Allows users of XM2Go radios to manage and organize recorded XM content as well as their own MP3 collections. You can create playlists, schedule recordings of XM programming, bookmark favorite songs and tracks, and purchase digital content like MP3s from Napster and audio books from audible.com.

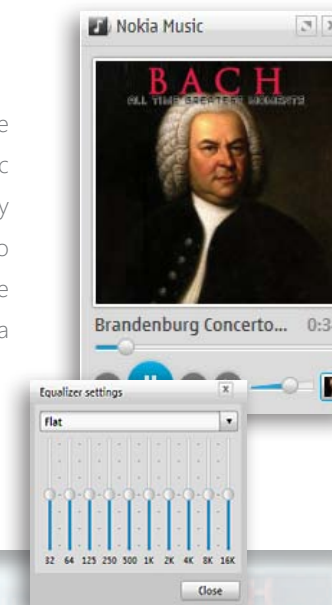
"WPF enabled us to create a user interface that is both easy to use and very effective in organizing and managing digital content; we were able to create a highly branded experience in a PC environment as well as a great value-added companion service for our radio products."

—Patrick Fitzgerald, SIRIUSXM VP, Interactive (Online Experience).



Nokia Music Nokia Music

Lets you search, organize and listen to your music collection in one easy place. Allows you to discover and purchase new music from the Nokia music store.

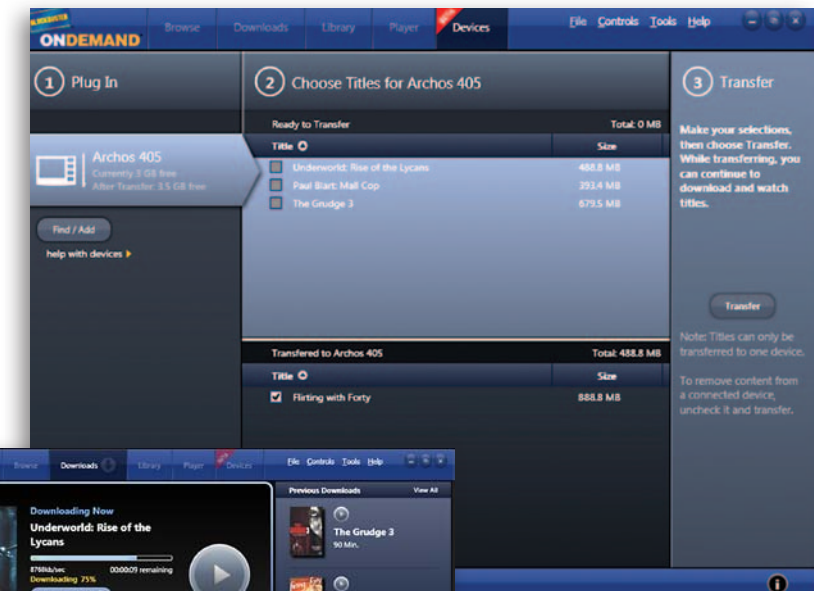


Blockbuster Blockbuster OnDemand

The Blockbuster OnDemand Application downloads and plays content purchased from Blockbuster.com. The application also facilitates the transfer of content to portable media players. It supports Rental (VOD) and Purchase (EST) movie and television content

"Moving to WPF has allowed us to create a much richer and immersing user experience with a quicker time to market. We now have a solid foundation on which to build future versions of Blockbuster's OnDemand Application."

—Michael Hayes, Vice President of Development.



Underworld: Rise of the Lycans - © 2009 Lakeshore Entertainment Group LLC. All Rights Reserved. Available on BlockBuster OnDemand.
Paul Blart: Mall Cop - © 2009 Columbia Pictures Industries, Inc. and Beverly Blvd LLC. All Rights Reserved. Available on BlockBuster OnDemand.
The Grudge 3 - © 2009 B and G Derivatives Holdings, LLC. All Rights Reserved. Available on BlockBuster OnDemand.
Flirting with Forty - © 2008 Sony Pictures Television Inc. and Nomadic Pictures Corp. All Rights Reserved. Available on BlockBuster OnDemand.

TOUCH & SURFACE

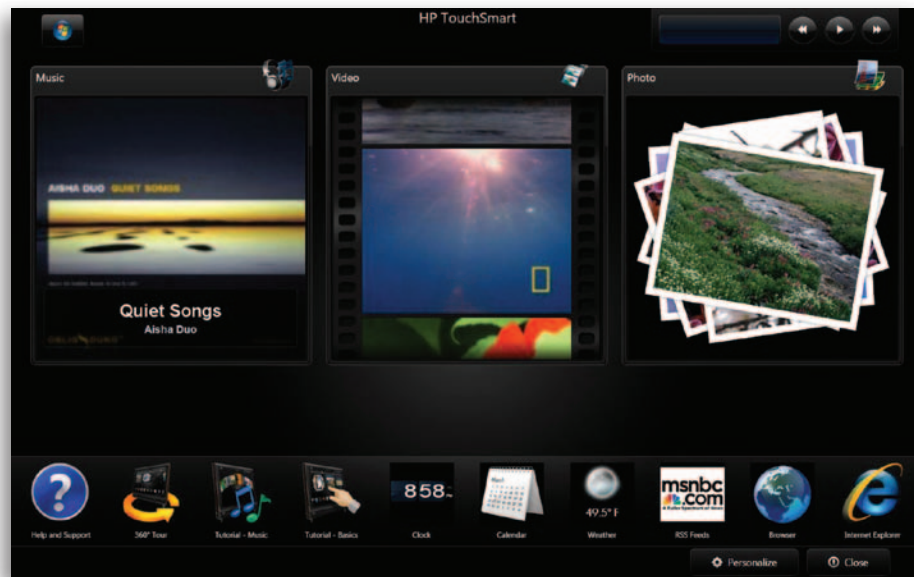
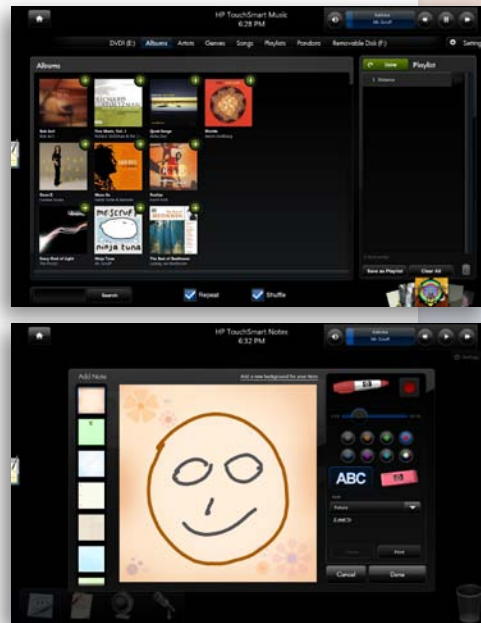
HP

HP TouchSmart

Companion Software for HP TouchSmart PCs. The software brings the digital world to your fingerprints: simplifying access to photos, videos, music, and other applications.

"Windows Presentation Foundation provided HP with the basis for building experience oriented applications in a timely manner for HP's flagship TouchSmart PC. The unique ability to blend together applications, UI and media content provided a tremendous advantage to HP in terms of creativity and time to market"

—Paul Rygaard, Director, Consumer PC SW & Services

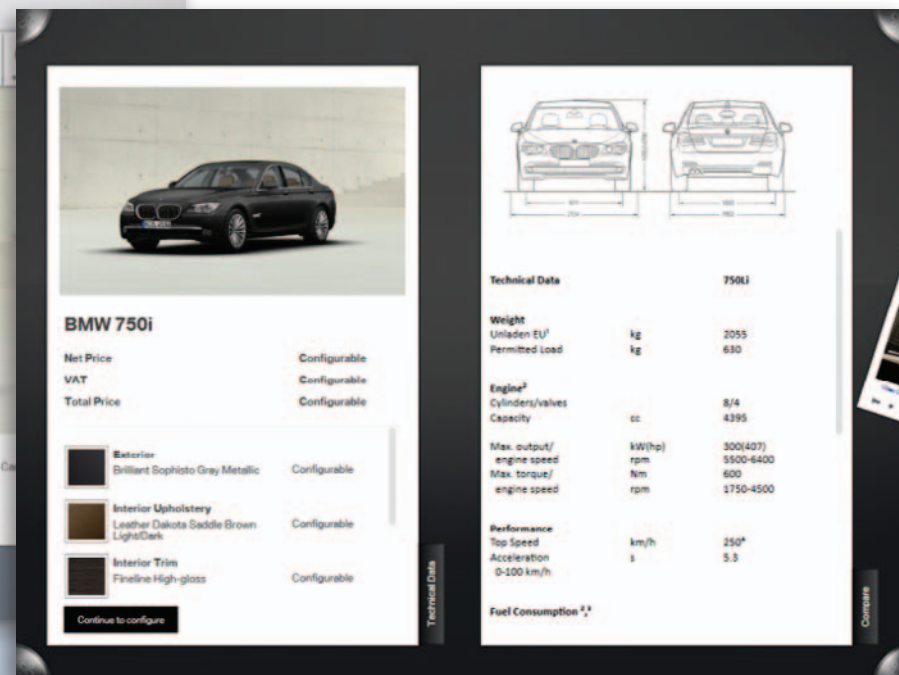
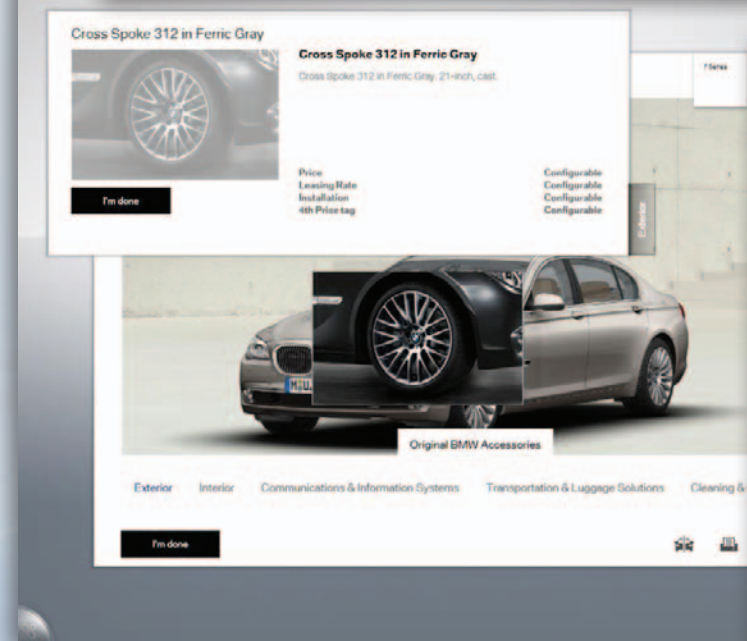
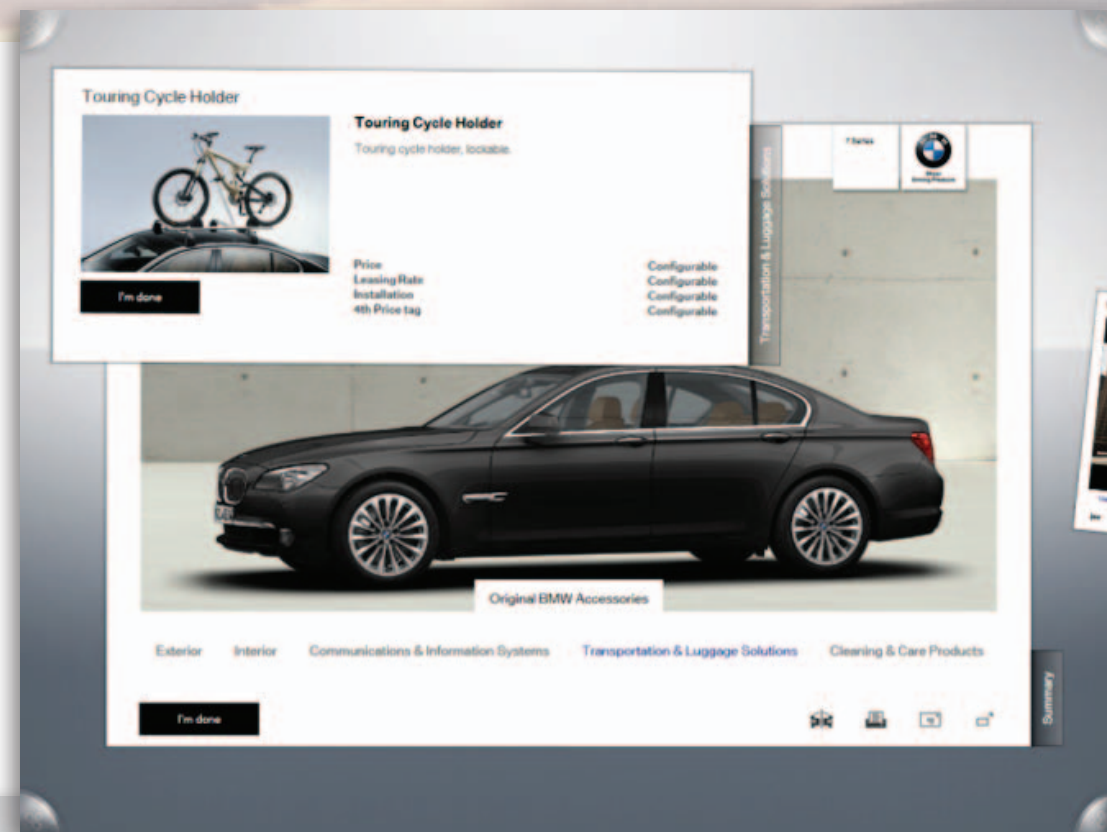


Hotel 1000

A digital concierge to browse the local Seattle attractions and restaurants near Hotel 1000. Users can watch and print photos, videos, and directions to all these attractions. The Surface device can also be used to browse the myriad of hotel amenities and services provided at Hotel 1000.

"We're not just about technology, but rather what technology allows us to do for our guests. Microsoft Surface is entertaining, and it's also very practical. As guests share in its 'wow factor,' they also learn about one another, our staff, and the attractions that our city offers—all of which contribute to a more personalized, enjoyable stay."

—Matt Hagerman,
Hotel Manager of Hotel 1000



BMW

BMW Product Navigator

Immersive and intuitive Surface application to transform a great luxury vehicle into the car of your dreams. Allows drivers to configure the interior, exterior, trim, wheels, seat, and optional packages of BMW products.

"The BMW 7 Series Product Navigator delivers a rich and immersive multi-touch experience that has revolutionized the customer and dealer relationship."

—Jason Vazzano, President, Vectorform

About Windows Presentation Foundation

Windows Presentation Foundation (WPF) is the graphics subsystem in the .NET Framework 3.0 and later. WPF comes installed as a system component on Windows Vista and Windows 7. You can freely download and redistribute WPF for your users running Windows XP and Windows Server.

As you can see from the screenshots and customer testimonials in this book, WPF enables developers and designers to create amazing, visually stunning Windows applications while increasing their own productivity. WPF's three-pronged approach incorporates:

- Modern vector graphics that are resolution independent and take advantage of graphics processing units (GPU) on most existing systems
- A unified approach to the user interface where 2D, 3D, text and documents, controls, images, and video seamlessly come together in a simple programming model. This unified framework includes higher level services – like layout, data binding, styling and animation – to enable rapid application development.
- Declarative user interfaces defined by an XML mark-up language (XAML) that allows developers and designers to produce user interfaces with tools optimized for their respective roles – Visual Studio for developers and the Expression Suite for designers. This new collaboration model produces higher fidelity designs and decreases redundancies between developers and designers.

About the scenarios

The scenarios in this book highlight the value of client technologies on the desktop. Indeed, all of the WPF applications in this book perform tasks that would have not been possible or would not have been practical to accomplish using a Web application. The recurrent traits of these client applications include:

- Integration with Windows shell and native desktop applications like Microsoft Office
- A rich and responsive graphics subsystem that require the power of a GPU to render demanding scenes – like 3D models.
- Access to devices and other system components that are not available in a browser sandbox
- Full screen access to the desktop without restrictions
- Ability to function while off-line or in occasionally-connected scenarios
- Persistent desktop presence for ambient information and quick access to actionable tasks

What about the many scenarios that do not require desktop client technologies?

For those scenarios, WPF developers can reuse their XAML skills, their tools, and even their .NET code by targeting Microsoft Silverlight, a highly compatible subset of WPF aimed at addressing the needs of cross-platform Rich Internet Applications.



